

My Favorite Thing at Westcave was:

Visit Westcave again with Family and Friends!

Make a reservation at www.westcave.org

Westcave is open to the public for guided tours to the grotto area, and self-guided hiking on our Uplands. The guided grotto hike takes visitors from an arid savannah through a limestone crevice into a sheltered canyon of lush plant life! At the head of the canyon stands Westcave, with a stunning 40-foot waterfall replenishing the emerald pool below. Each tour is 1.5 hours of hiking, learning, and fun on a 1 mile loop trail.

Additional Activities and Resources at:

westcave.org/resources/teacher-resources

24814 Hamilton Pool Rd

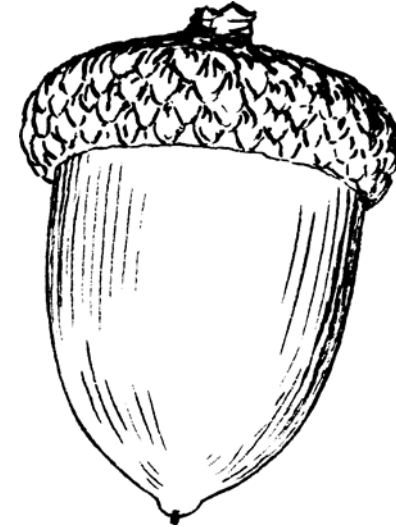
Round Mountain, TX 78663

(830) 825-3442

info@westcave.org



Westcave Preserve



Date: _____

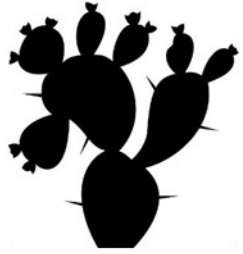
Group: _____

Explorer Name: _____

"Humankind has not woven the web of life. We are but one thread within it. Whatever we do to the web, we do to ourselves. All things are bound together. All things connect."

~Chief Seattle, Duwamish

Scavenger Hunt in the Savannah



Cactus



Fossil



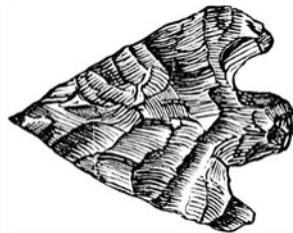
Native Grass



Live Oak Tree



Bird



Flint Rock

Westcave Story Word Search

S L X P T L K N Y Z S Y
 T E I V O R I X Y S M Y
 A V K V A I H S E M S L
 L R L P E S S R S T B K
 A E R I I O P O A O C Y
 C S E F T Y A L N O F S
 T E W E C T A K R I U R
 I R O D K G E T T T V B
 T P L N M A N R C R I Y
 E A F I R I N A I R E G
 B M T K L E C S D N R E
 Y E J F Z M F T N M G D

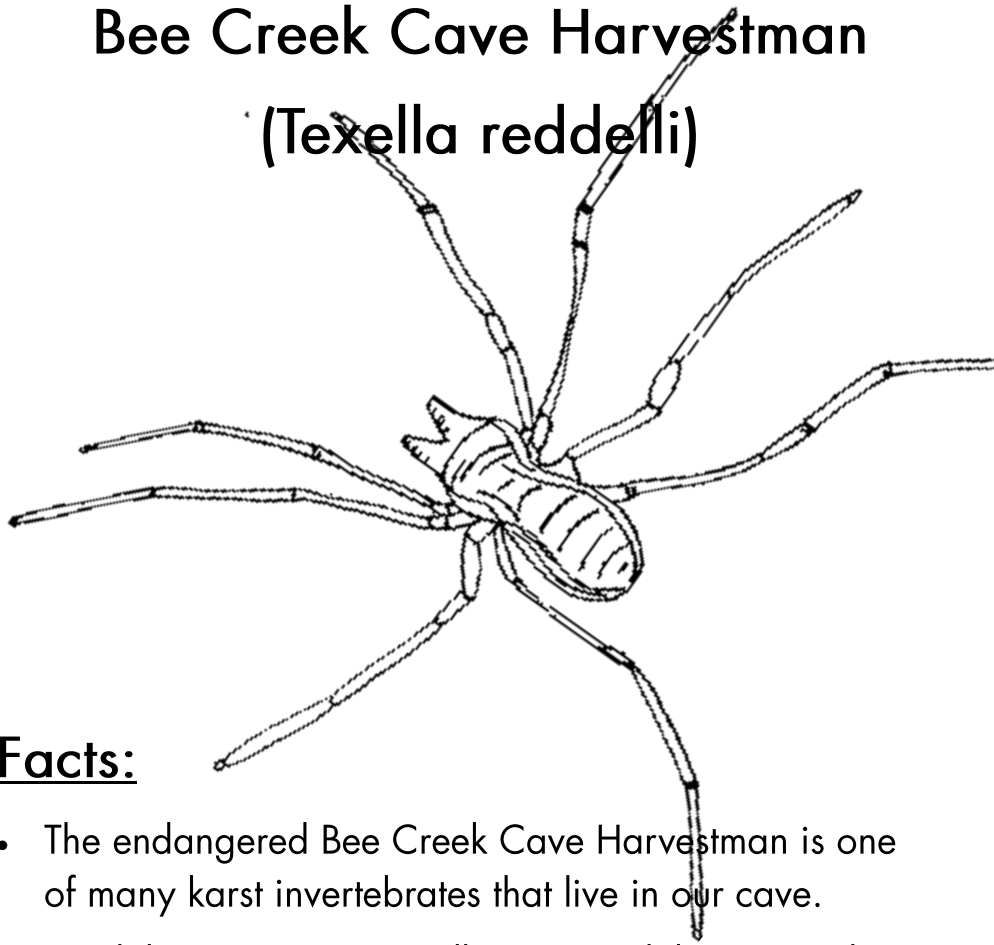
Word Bank

Bald Cypress
 Bird
 Cactus
 Fern
 Fish
 Flint Rock

Flower
 Fossil
 Littering
 Live Oak Tree
 Park
 Poison Ivy

Preserve
 Snake
 Stalactite
 Stalagmite

Bee Creek Cave Harvestman (*Texella reddelli*)



Facts:

- The endangered Bee Creek Cave Harvestman is one of many karst invertebrates that live in our cave.
- Troglobites = "Cave Dwellers," spend their entire lives inside of caves, with long appendages, translucent coloration, and lack of eyes adaptations.
- A harvestman is not a spider.
 - Spiders = two distinct body segments
 - Harvestmen = fused body or one segment.
- There are currently 6 endangered Karst invertebrates in the Balcones Canyonlands Preserve.

Scavenger Hunt in the Riparian Woodland



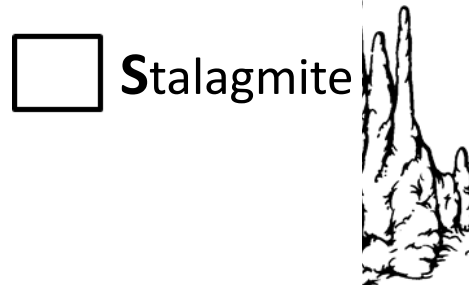
Fern



Poison Ivy



Stalactite



Stalagmite



Bald Cypress



Fish



Reptile

Let your imagination run wild!

Reflect on your visit at Westcave and draw, write, or sketch your observations or experience below:

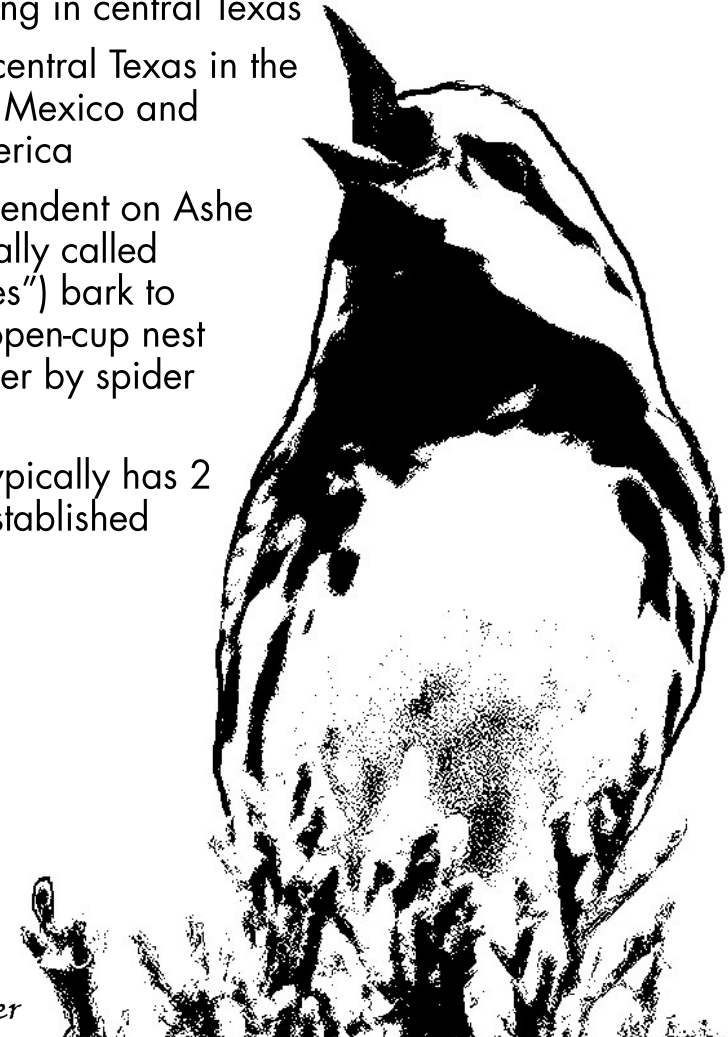
How can you stand up for the Earth?

Golden-cheeked Warbler

(Dendroica chrysoparia)

Facts:

- Listed as an endangered species in May of 1990
- Eat insects and spiders
- Are native Texans. They raise all their young in central Texas
- Migrate to central Texas in the spring from Mexico and Central America
- Entirely dependent on Ashe Juniper (locally called "Cedar Trees") bark to build their open-cup nest held together by spider webs.
- Westcave typically has 2 territories established each year.



Tom Hausler